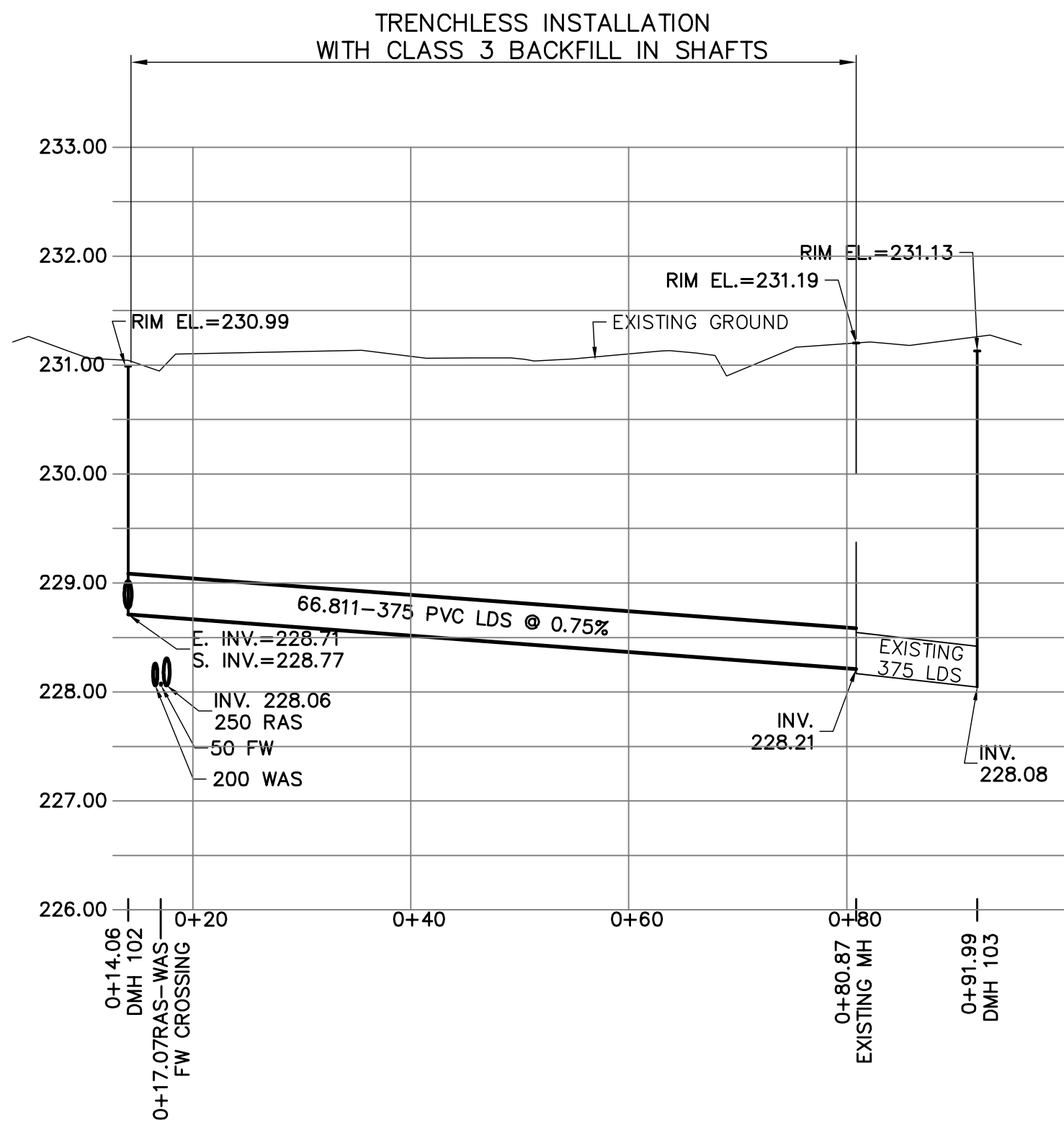
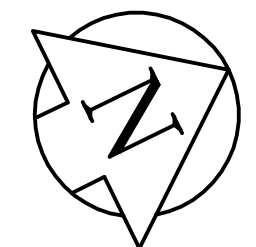
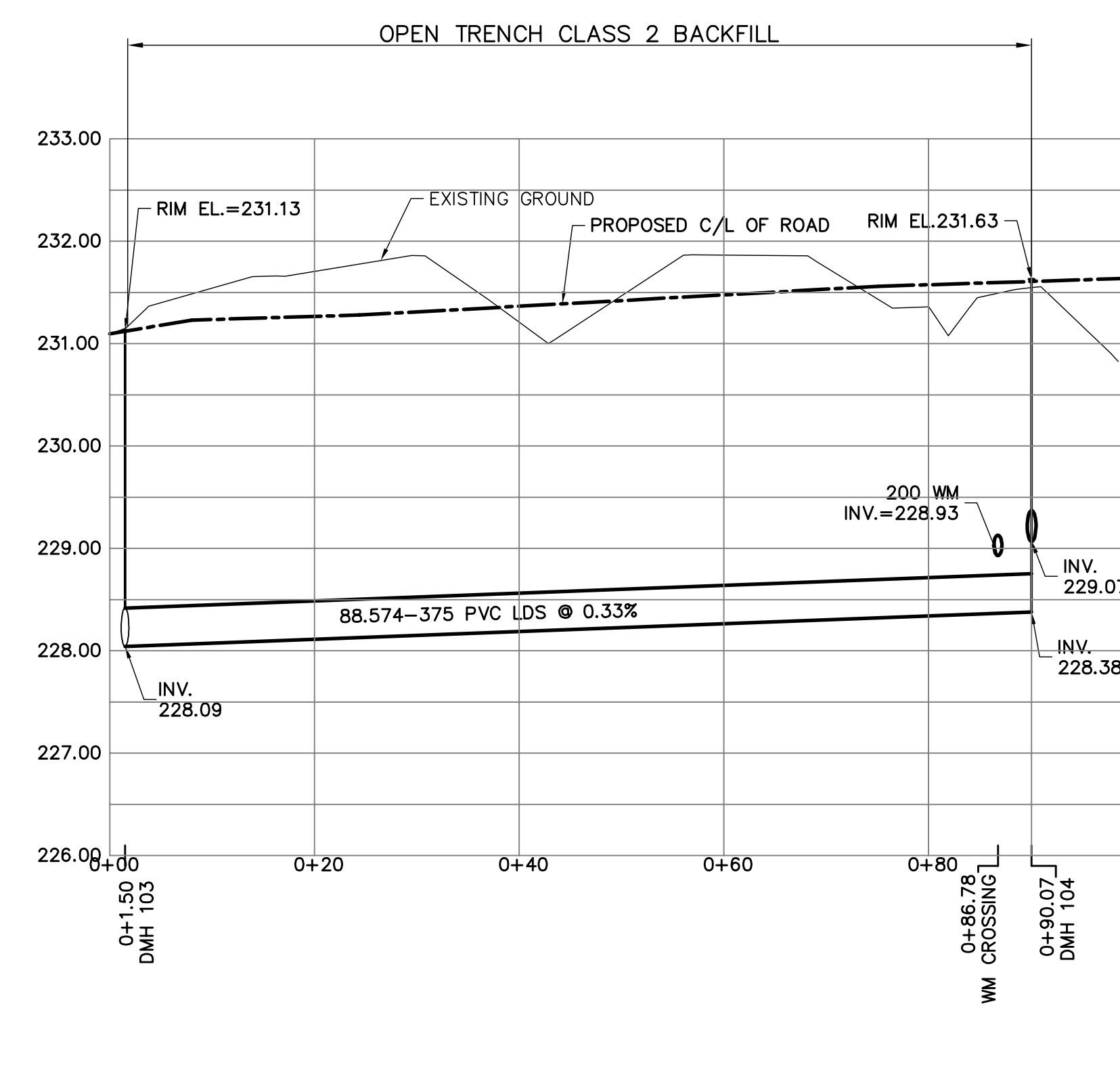
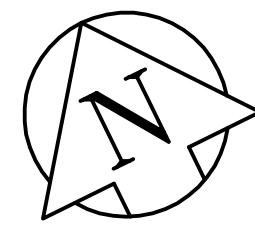


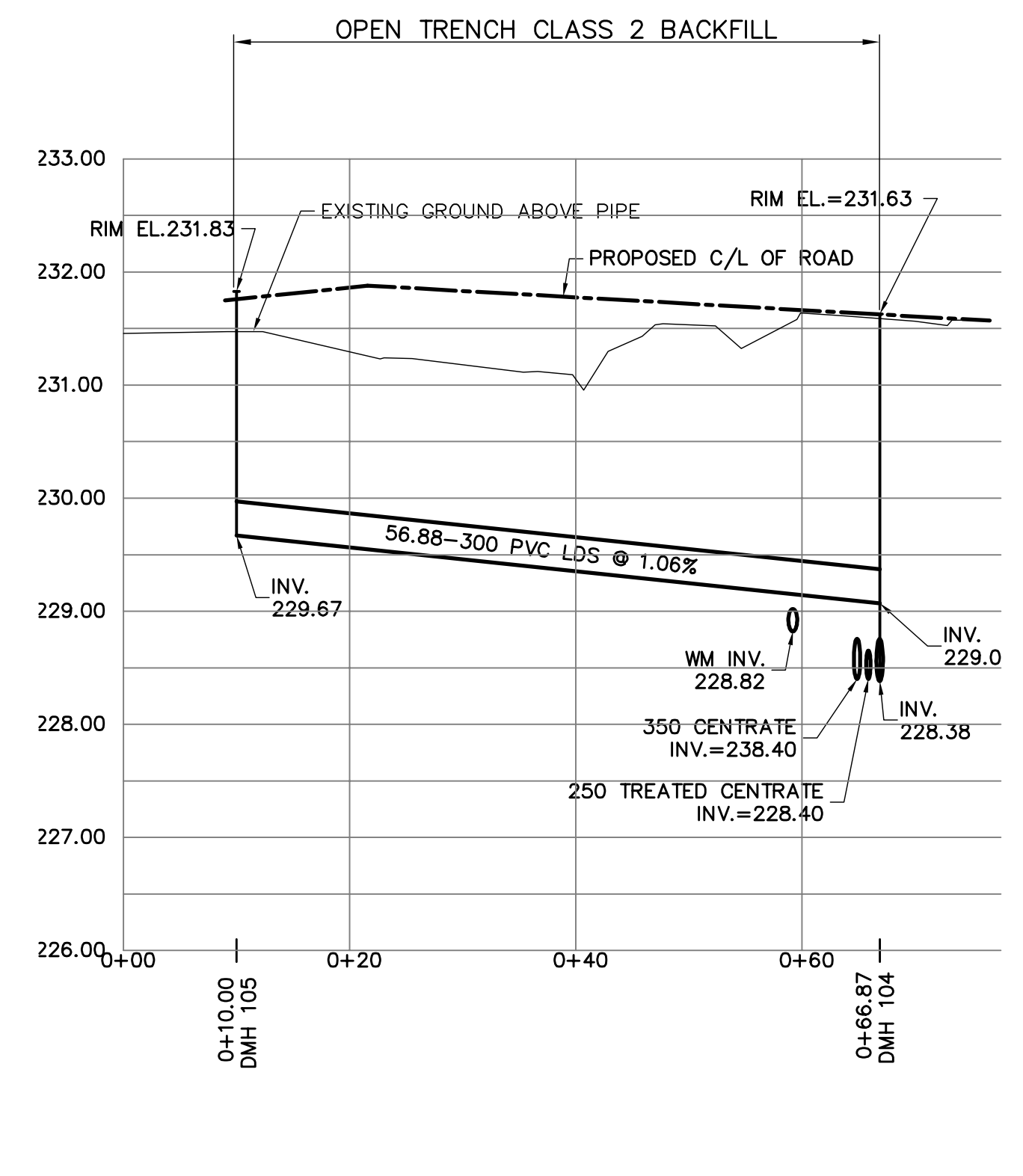
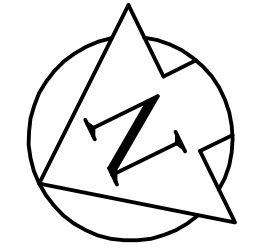
1 PROFILE  
SCALE AS SHOWN



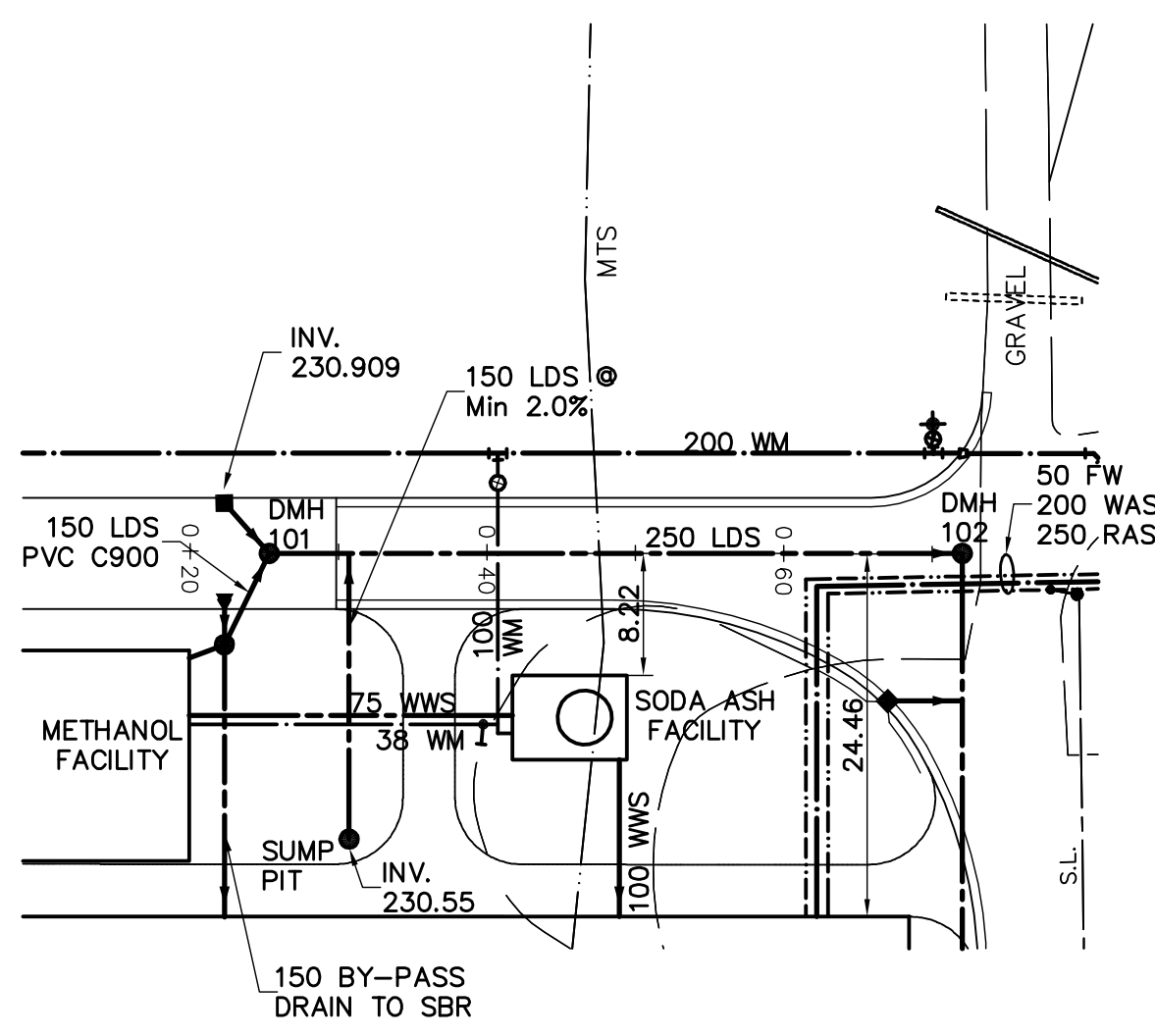
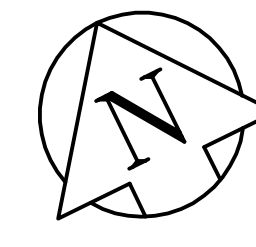
2 PROFILE  
SCALE AS SHOWN



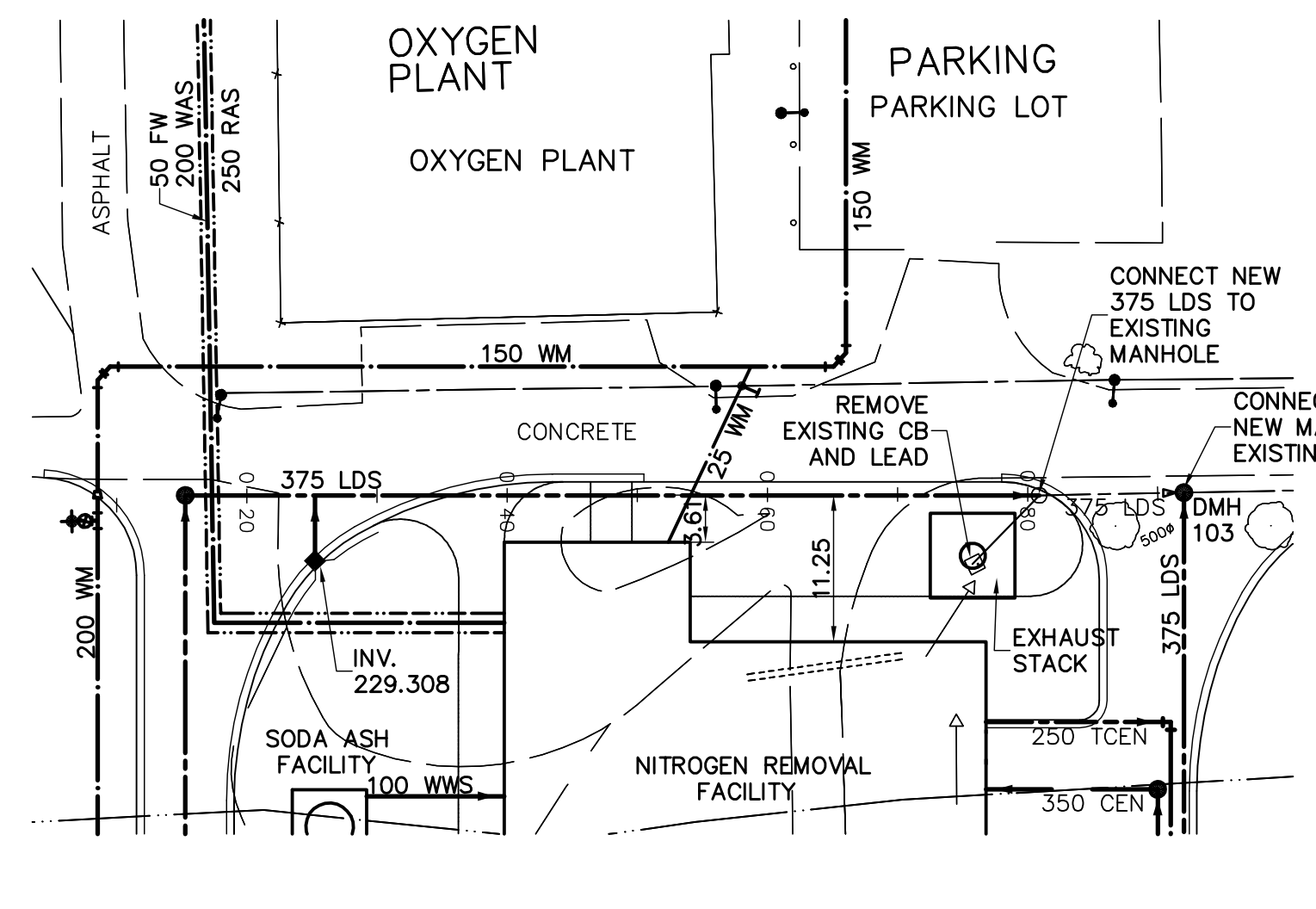
3 PROFILE  
SCALE AS SHOWN



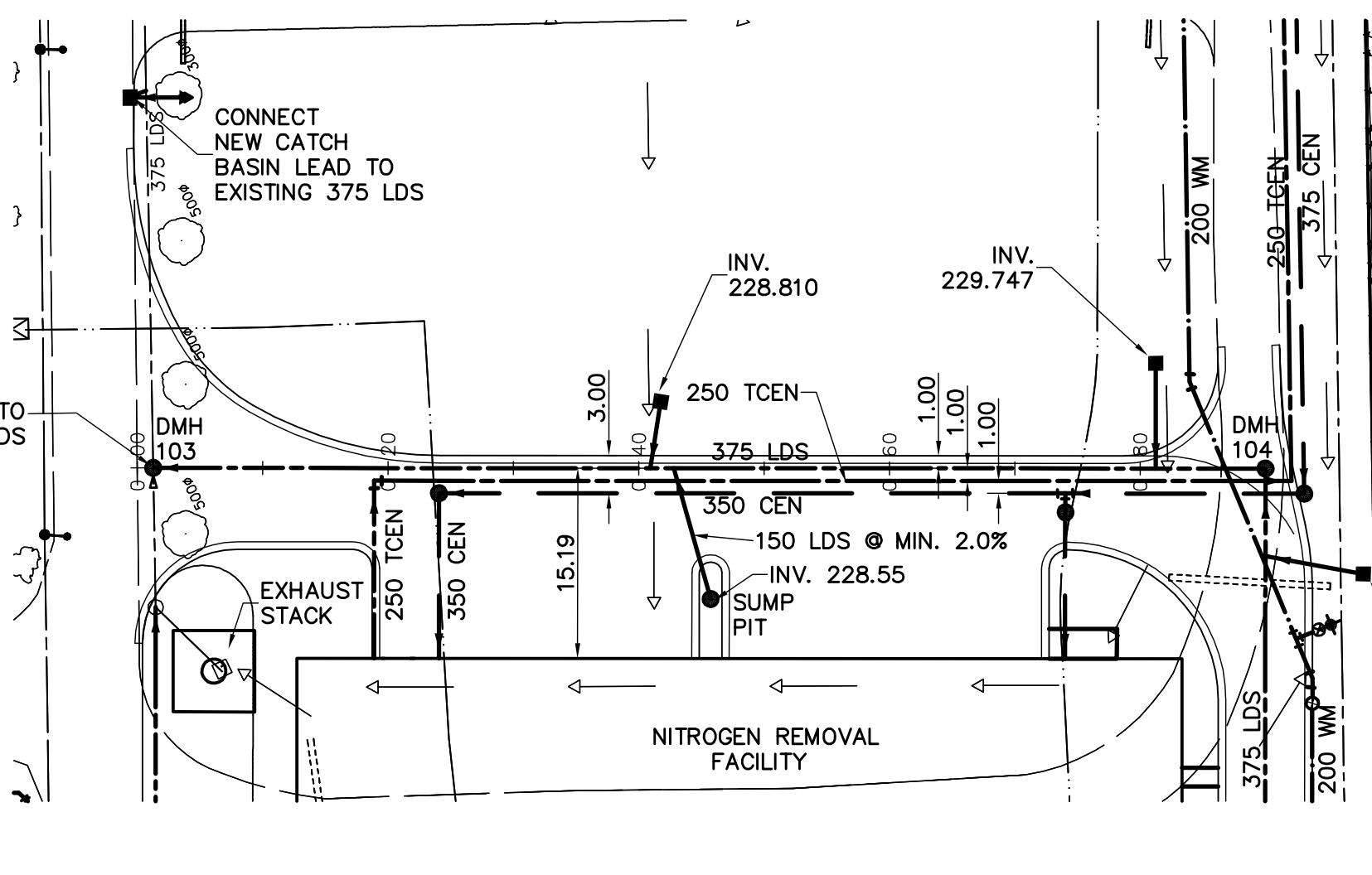
4 PROFILE  
SCALE AS SHOWN



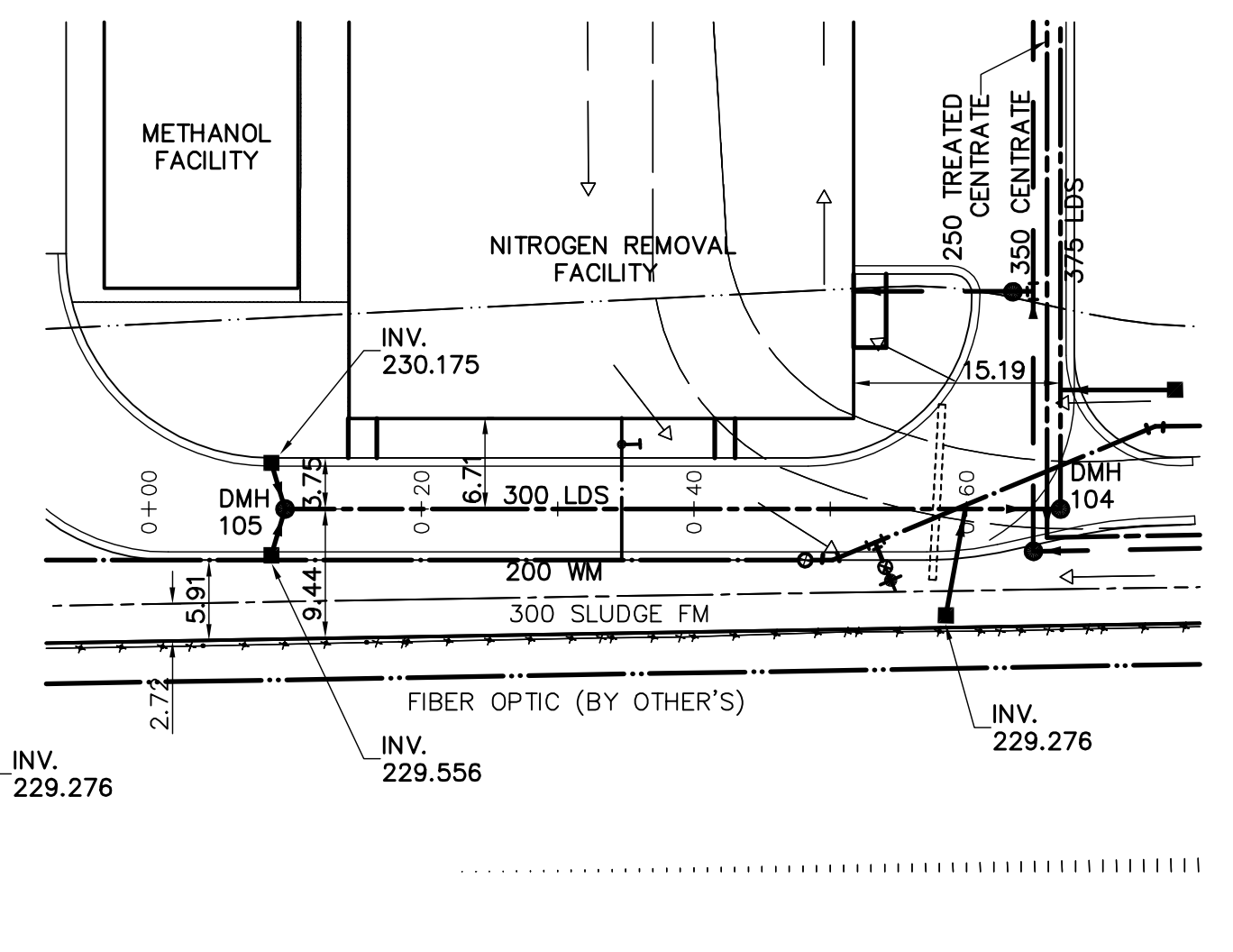
1 PLAN  
SCALE AS SHOWN



2 PLAN  
SCALE AS SHOWN



3 PLAN  
SCALE AS SHOWN



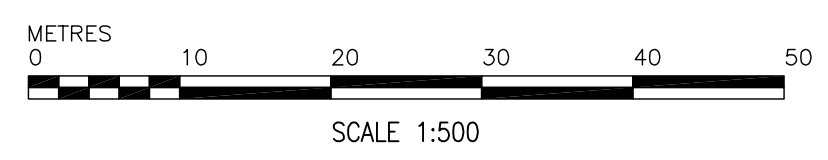
4 PLAN  
SCALE AS SHOWN

GENERAL NOTES:

- A. BASELINE MEASURED DOWN CENTERLINE OF WATERMAIN.
- B. EARTHTECH FIELD BOOK No. 4401
- C. LOCATION OF UNDERGROUND STRUCTURES AS SHOWN ARE BASED ON THE BEST INFORMATION AVAILABLE, BUT NO GUARANTEE IS GIVEN THAT ALL EXISTING UTILITIES ARE SHOWN OR THAT THE GIVEN LOCATIONS ARE EXACT. CONFIRMATION OF EXISTENCE AND EXACT LOCATION OF ALL SERVICES MUST BE OBTAINED FROM THE INDIVIDUAL UTILITIES BEFORE PROCEEDING WITH CONSTRUCTION.

CONSTRUCTION NOTES

- 1. ALL CATCH BASIN ARE 1.80m DEEP UNLESS NOTED.
- 2. ALL CATCH BASIN LEADS ARE 250mm PVC SDR35 UNLESS NOTED
- 3. SEE DRAWING 8.01 FOR FINISHED CATCH BASIN RIM ELEVATION
- 4. LDS PIPING TO BE PVC DR35 FOR SIZES 150-250mm AND PVC DR35 OR OPEN PROFILE RIBBED PVC FOR SIZES 300-375mm UNLESS NOTED.



AECOM

As of January 3, 2009, EarthTech became AECOM Canada Ltd.

AECOM AS-CONSTRUCTED

150 mm W.M.	WATERMAIN	150 mm W.M.	HYDRO	HYDRO	LIGHT STANDARD
Hydrant	HYDRANT	Hydrant	M.T.S.	M.T.S.	BOLLARD
Valve	VALVE	Valve	CONCRETE	CONCRETE	FIRE EXTINGUISHER
300mm L.D.S.	LAND DRAINAGE SEWER	300mm L.D.S.	ASPHALT	ASPHALT	CURB STOP
250mm W.W.S.	WASTEWATER SEWER	250mm W.W.S.	PROPERTY LINE	PROPERTY LINE	TREATED CENTRATE
Manhole	MANHOLE	Manhole	TEST HOLES	TEST HOLES	@ RAILWAY TRACK
Catch Basin	CATCH BASIN	Catch Basin	ELEVATION	ELEVATION	DITCH
Curb Inlet	CURB INLET	Curb Inlet	TREE	TREE	RAS
Junctions	JUNCTIONS	Junctions	ANODE	ANODE	WAS
Culvert	CULVERT	Culvert	CONCRETE SIDEWALK	CONCRETE SIDEWALK	FW
Gas	GAS	Gas	FENCE	FENCE	CENTRATE
EXISTING	LEGEND - PLAN	PROPOSED	EXISTING	LEGEND - PLAN	PROPOSED

AECOM Canada Ltd.  
Original dated on: No. 4671 Date: 2006/05/15

03	AS-CONSTRUCTED DRAWING	09/02/18	CD
02	ISSUED FOR CONSTRUCTION	06/08/30	GLG
01	291-2006 ADDENDUM 3	06/07/12	MAF
00	ISSUED FOR TENDER	06/05/15	FC
NO.	REVISIONS	DATE	BY

EarthTech  
A Tyco International Ltd. Company

DESIGNED BY	GSK	CHECKED BY	KWF
DRAWN BY	FC	APPROVED BY	JEH
SCALE:	HOR: 1:500 VERT: 1:50	RELEASED FOR CONSTRUCTION BY:	K. MARTENS
DATE	2006/01/15	DATE	2006/05/15

ENGINEER'S SEAL  
ORIGINAL SIGNED BY  
K.W. FITCHETT  
2006/05/15  
CONSULTANT DRAWING NO.  
C6.01

THE CITY OF WINNIPEG  
WATER AND WASTE DEPARTMENT  
ENGINEERING DIVISION  
NEWPCC CENTRATE NUTRIENT TREATMENT  
NITROGEN REMOVAL FACILITY  
CIVIL  
LAND DRAINAGE  
PLAN AND PROFILE  
CITY FILE NUMBER  
SHEET OF  
CITY DRAWING NUMBER  
1-0101C-C0008-001-03